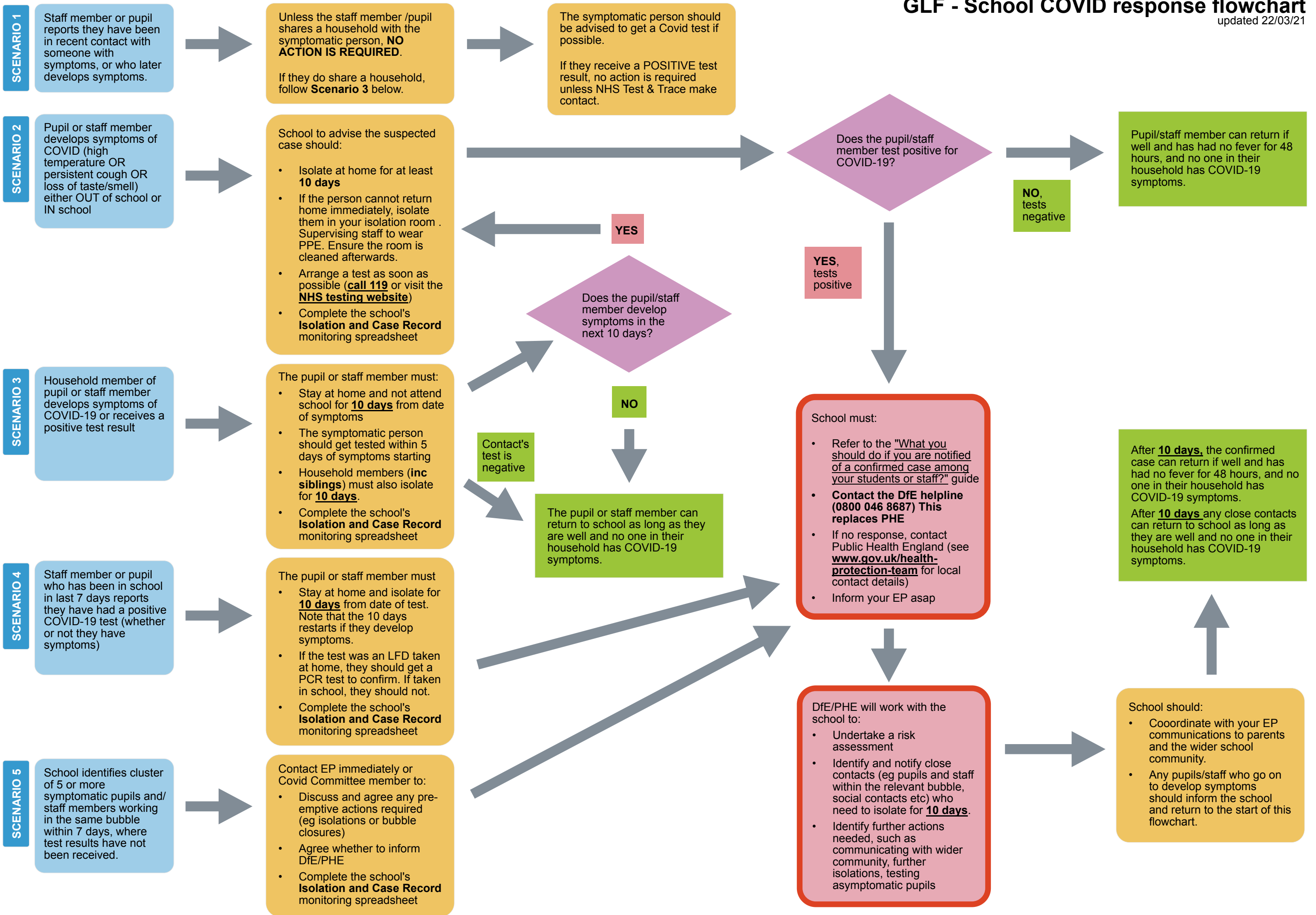


GLF - School COVID response flowchart

updated 22/03/21



SCENARIO 1

Staff member or pupil reports they have been in recent contact with someone with symptoms, or who later develops symptoms.

Unless the staff member /pupil shares a household with the symptomatic person, **NO ACTION IS REQUIRED**.
If they do share a household, follow **Scenario 3** below.

The symptomatic person should be advised to get a Covid test if possible.
If they receive a **POSITIVE** test result, no action is required unless NHS Test & Trace make contact.

SCENARIO 2

Pupil or staff member develops symptoms of COVID (high temperature OR persistent cough OR loss of taste/smell) either OUT of school or IN school

School to advise the suspected case should:

- Isolate at home for at least **10 days**
- If the person cannot return home immediately, isolate them in your isolation room . Supervising staff to wear PPE. Ensure the room is cleaned afterwards.
- Arrange a test as soon as possible (**call 119** or visit the **NHS testing website**)
- Complete the school's **Isolation and Case Record** monitoring spreadsheet

SCENARIO 3

Household member of pupil or staff member develops symptoms of COVID-19 or receives a positive test result

The pupil or staff member must:

- Stay at home and not attend school for **10 days** from date of symptoms
- The symptomatic person should get tested within 5 days of symptoms starting
- Household members (**inc siblings**) must also isolate for **10 days**.
- Complete the school's **Isolation and Case Record** monitoring spreadsheet

SCENARIO 4

Staff member or pupil who has been in school in last 7 days reports they have had a positive COVID-19 test (whether or not they have symptoms)

The pupil or staff member must

- Stay at home and isolate for **10 days** from date of test. Note that the 10 days restarts if they develop symptoms.
- If the test was an LFD taken at home, they should get a PCR test to confirm. If taken in school, they should not.
- Complete the school's **Isolation and Case Record** monitoring spreadsheet

SCENARIO 5

School identifies cluster of 5 or more symptomatic pupils and/ staff members working in the same bubble within 7 days, where test results have not been received.

Contact EP immediately or Covid Committee member to:

- Discuss and agree any pre-emptive actions required (eg isolations or bubble closures)
- Agree whether to inform DfE/PHE
- Complete the school's **Isolation and Case Record** monitoring spreadsheet

Does the pupil/staff member test positive for COVID-19?

NO, tests negative

Pupil/staff member can return if well and has had no fever for 48 hours, and no one in their household has COVID-19 symptoms.

Does the pupil/staff member develop symptoms in the next 10 days?

YES

YES, tests positive

NO

Contact's test is negative

The pupil or staff member can return to school as long as they are well and no one in their household has COVID-19 symptoms.

School must:

- Refer to the "What you should do if you are notified of a confirmed case among your students or staff?" guide
- Contact the DfE helpline (0800 046 8687) This replaces PHE**
- If no response, contact Public Health England (see www.gov.uk/health-protection-team for local contact details)
- Inform your EP asap

After **10 days**, the confirmed case can return if well and has had no fever for 48 hours, and no one in their household has COVID-19 symptoms.
After **10 days** any close contacts can return to school as long as they are well and no one in their household has COVID-19 symptoms.

DfE/PHE will work with the school to:

- Undertake a risk assessment
- Identify and notify close contacts (eg pupils and staff within the relevant bubble, social contacts etc) who need to isolate for **10 days**.
- Identify further actions needed, such as communicating with wider community, further isolations, testing asymptomatic pupils

School should:

- Coordinate with your EP communications to parents and the wider school community.
- Any pupils/staff who go on to develop symptoms should inform the school and return to the start of this flowchart.